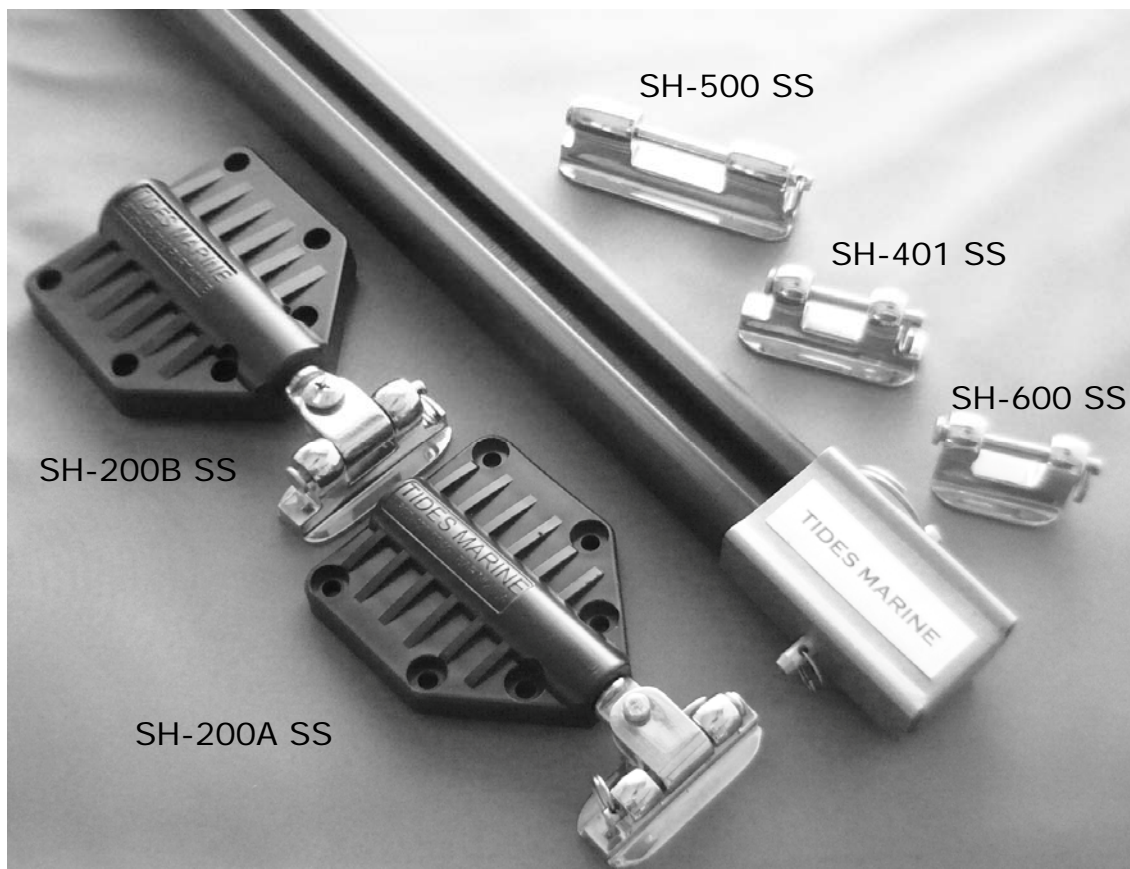


# TIDESMARINE

## SailTrack Installation Instructions

### CMPE Track



[www.tidesmarine.com](http://www.tidesmarine.com)

This Tides Marine Sail Track System is used to attach a Tides Track to a bare carbon fiber, composite or wooden mast without existing track. It can also be used on any mast where there is no track or the existing track is going to be removed.

## Before You Begin



Based upon the length of track you order, Tides Marine will estimate the number of CMPE fasteners you will need to complete the installation. Tides provides 1 fastener for every 3.5" - 4" of track... approximately 120 fasteners for the average 40' track.

These fasteners will be found in a bag in the box containing the sail slides and other hardware associated with this installation.

Open the bag containing the CMPE fasteners and check the surface edges of each fastener to make certain they are free of nicks or burrs. Smooth any rough edges with a file or wet/dry sandpaper.

The recommended spacing for the fasteners is as follows:

### Load Points:

At the Head: every 3" for the top 2' of track.

At the Tack: every 3" for the bottom 2' of track.

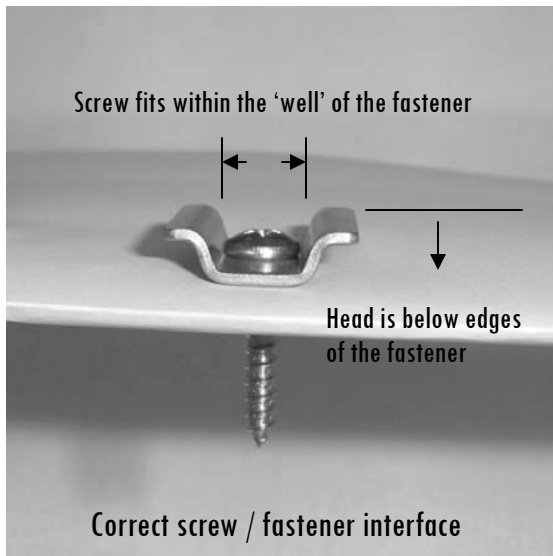
Reef Points: every 3" for a distance of 1 foot above and 1 foot below the point where the headboard will be located when the sail is reefed.

Between these load points normal spacing is every 6" (or whatever lays out best). When laying out the fasteners between the load points, do not exceed 6". Closer spacing is always better.

## Screws

Tides Marine does NOT provide the screws to be used to attach each fastener to the mast. They can be stainless pan head machine screws (requires each hole in the mast to be drilled and tapped) or stainless pan head self-tapping screws.

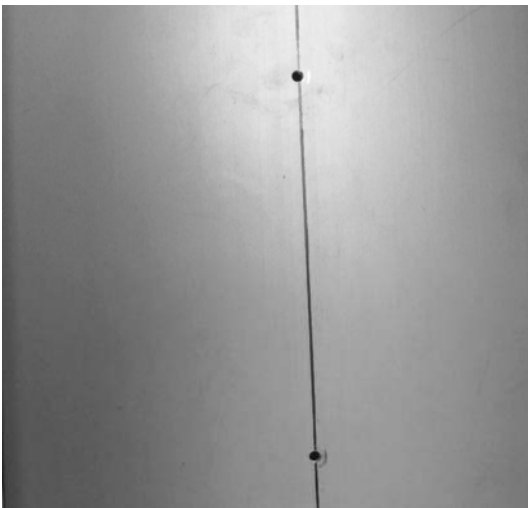
When purchasing your screws, make certain the top of the pan head profile remains below the edges of the fastener. See photo on the facing page.



## Installation:

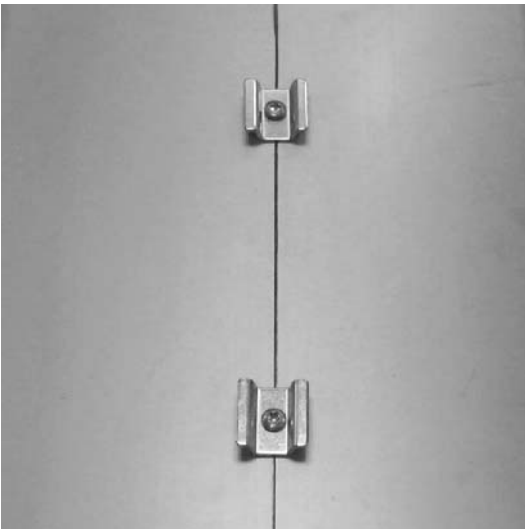
Tides recommends that you install the CMPE track on the mast while it is out of the boat. Spacing, aligning and securing the CMPE fasteners is critical to this installation. It is all but impossible to complete this installation while the mast is stepped.

## Track Installation Instructions



- 1 The CMPE fasteners need to be installed in a straight line if the system is to work properly. Snap a chalk line from the mast head to the gooseneck down the center of the back of the mast.

Lay out your spacing along the chalk line. If you are using stainless pan head screws, drill and tap your holes along this line. If you are using stainless self-tapping screws, simply drill your holes along this line.



- 2 Attach the fasteners using Blue Loctite on the screws. Align the fasteners one with the other. A long straight edge laid against the outside edge of the fasteners should help here.



- 3 Tides track is shipped to you in a roll. The outer end of the track is the “top” of the track (the end that starts over the fastener nearest the gooseneck).



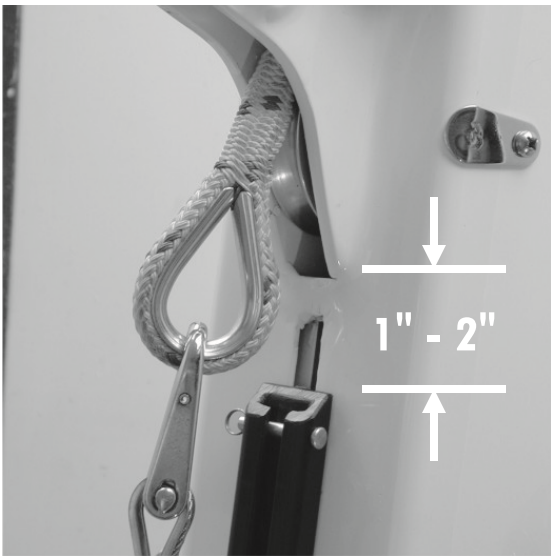
- 4 Cut the first two or three “outermost” tie wraps. This will keep the rest of the roll manageable.



- 5 Press the top of the track against the mast with one hand and push the Tides Track over the fasteners with the other using short strokes. It will be necessary to have someone walk along the mast to press the top of the track against the mast, ensuring that it catches each fastener as it is pushed up.

**DO NOT TRY TO PULL THE TRACK UP THE MAST.** This is a two-person job: one person pushes the track onto the mast and the other guides the track over the CMPE fasteners.

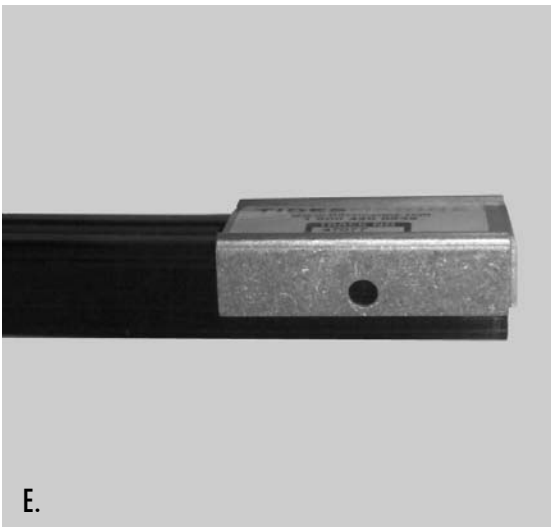
**Lubricants:** In most cases, the Tides Track will slide smoothly over the CMPE fasteners and up the mast. If you think a lubricant is necessary, just use water or water combined with a very small amount of liquid detergent. **DO NOT use such lubricants as WD-40 as they may leave residue on the track / mast which may collect dirt, dust or other debris.**



- 6 When the track reaches the masthead, pull the track down 1"-2". Make certain the track is clear of any masthead fittings.

If the Tides Track is too long, we recommend that you:

- A) Measure and mark the base of the track to identify how much you need to remove while the track is still on the spar.
- B) Remove the Tides Track from your spar.
- C) Transfer the measurement from the bottom of the track to the top of the track.
- D) Using a jig saw or circular saw, remove the measured amount of extra track from the top of the track.
- E) Using the stainless steel base plate (included with your Tides Track hardware) as a guide, drill a 1/4" hole from one side of the top of the track to the other, about 1" from the end of the top of the track. Install the original clevis pin and ring. (See Photo E).
- F) Install the track as before.



- 7 Ensure that the track is where you want it. Make any up or down adjustments NOW.

Install the self-tapping screw. Do not over tighten as this may pull the edges of the track together causing the slides to jam in this area.



- 8 Once the slides have been attached to the mainsail, you can insert them into the Tides Track. Remove the stainless steel cover plate from the base of the track.

Tides machines a mast gate into the bottom of each track.

Starting with the headboard slide, insert each slide into this mast gate. As the slides go into the track, make sure that the “head” of each small clevis pin in the slide faces the mast head...the end containing the clevis ring should face the boom. If the clevis rings deteriorate over time, the pin should remain in the slide and the system should function normally.

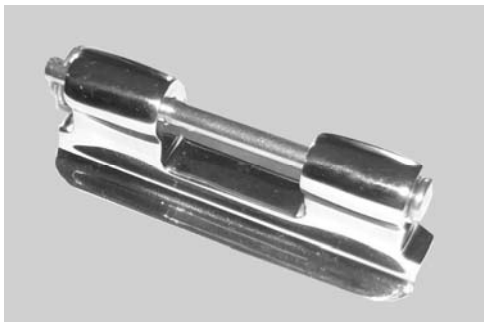


- 9 When all slides are in position, place the stainless end-cap over the bottom of the Tides Track and secure using the pin provided.

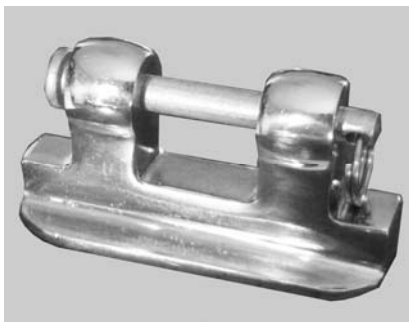
# Attaching Tides Hardware to the Mainsail

## Slides

Tides recommends that you use the services of a local loft to attach the slides and batten receptacles to your mainsail. Should you decide to perform this task yourself, the following information may prove helpful.



Headboard slide



Reef slide



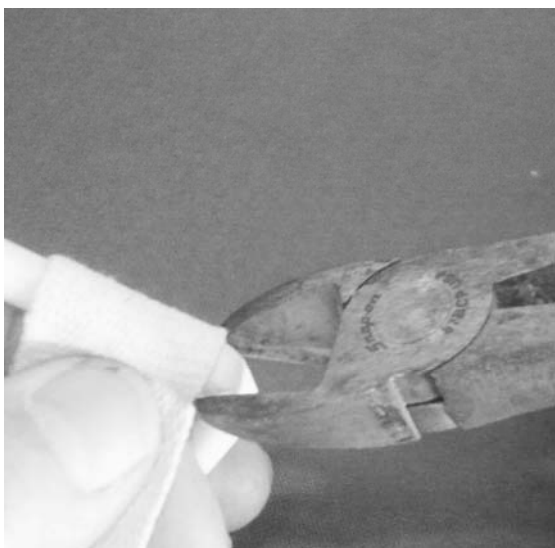
Luff slide



SH-200A Batten Receptacle w/401 slide and universal



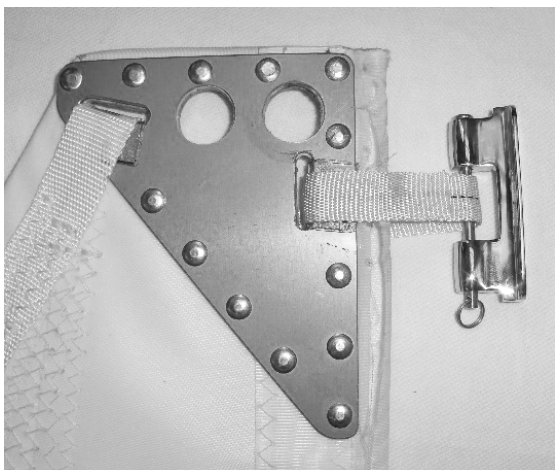
SH-200B Batten Receptacle w/401 slide and universal



- 1 If your current main has plastic or metal luff sides, cut them away from the main using a shear, Dremel tool or small saw.

**Be careful not to damage the webbing around each slide.**





- 2 Begin with the headboard slide. Press the webbing between the posts of the headboard slide.

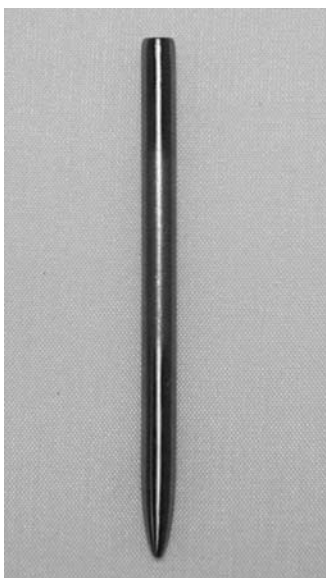
Insert the clevis pin through the top post... through the webbing... through the bottom post.

Insert the clevis ring through the base of the clevis pin. The head of the clevis pin should be at the “masthead” end of the assembly and the clevis ring at the “deck” end.



- 3 Pressing the webbing between the posts of the luff slide and installing the clevis pin can be a challenge.

The opening in the webbing through which the clevis pin passes can constrict when the webbing is pressed between the posts of the slide.

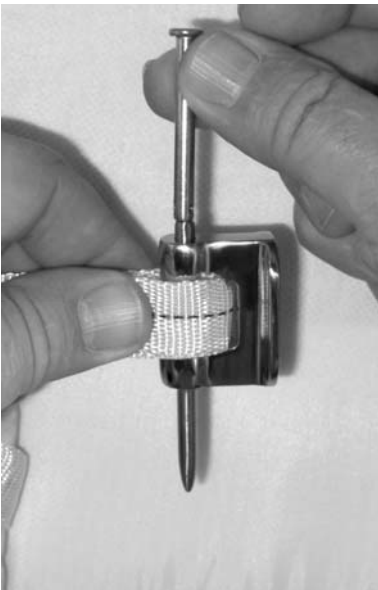


- 4 Tides supplies a small aluminum “installation tool” with each sail track hardware kit.





- 5 Press the narrow end of the tool through the upper post and into the webbing. The pointed end of this tool should work its way through the webbing, opening the hole that was once there.



- 6 Once the tool is through the webbing and the bottom post, simply press the clevis pin against the back of the tool and “chase” the tool through the posts and webbing with the clevis pin.



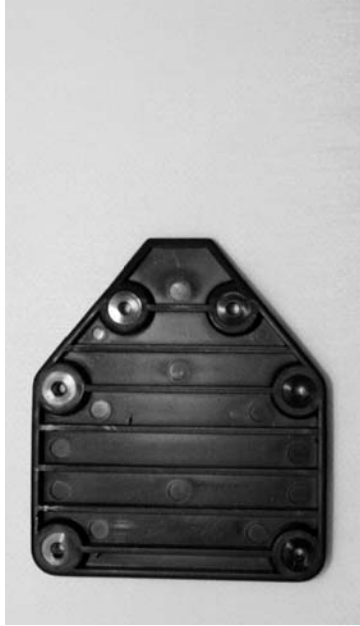
- 7 Continue with the balance of the slides.

## Batten Receptacles

In most cases, Tides Marine has designed a slide option that will accept the batten receptacles you currently have in place on your mainsail. If you will be replacing your current batten receptacles, the following suggestions may be helpful:



Side A - Exterior



Side B - Exterior

The Tides receptacle is a two-piece unit. Side A has Tides Marine printed on it and has a rounded center section. Side B is flat with ridges on the outside.

To make installation easier, remove the sail slide with universal joint from Side A of the receptacle and set it aside until you have finished attaching the receptacle to the sail.



- 1 Lay the sail out - batten side up. Remove the existing batten receptacle and position Side A of the Tides receptacle in its place (abutting the luff rope).



- 2 Using the receptacle as a template, mark the sail through each of the receptacle's "installation holes".



- 3 Using a punch, drill or other sharp object, create a hole in the sail fabric at each of these points.

## Leech-Adjustable Batten Pockets



- 1 If you have “leech-adjustable” batten pockets, remove the tension on the batten before attaching the Tides receptacles. Then, cover the luff end of the batten with Side A of the Tides receptacle. The batten should fit neatly within the cavity of this Side A.

Position Side B on the other side of the sail, “smooth surface” against the sail.



- 2 Pass the stainless steel screws through Side A... then the sail... into Side B. Snug.

## Plain Leech Batten Pockets



- 3 If the leech batten pocket is not adjustable, you will have to tension the batten within the cavity of Side A before you install the stainless assembly screws through the mainsail and into Side B. Patience is required.
- 4 Once the batten receptacles have been attached to the sail, insert a 10mm stud/universal joint/slide assembly into the threaded hole in Side A of each Tides receptacle. DO NOT TIGHTEN COMPLETELY. THIS ALLOWS THE RECEPTACLE TO ROTATE FREELY WHEN FLAKING THE SAIL ONTO THE BOOM.

With the batten receptacles and slides completed and the rest of the slides attached, you are now ready to install your mainsail onto your new Tides Track. Please refer to Page 5, Step #8 . If you have adjustable battens, re-tension them as you raise the sail.

## Finishing Touches

Once the Tides Track system has been installed, the following checklist is offered for those of us who are members of the “belt and suspenders” crowd:

When weather conditions allow, raise the main while the yacht is still at the slip/mooring. Tension the halyard as you usually do and, using binoculars, inspect the headboard position on the sail track.

Is it clear of masthead hardware and rigging?

Is the headboard slide at least 2-3 inches short of the quick pin at the top of the Tides Track?

Release the halyard and flake the main. Check the stack height. Can you still reach the halyard at the headboard?

Does the yacht’s sail cover still fit neatly around the main?

Congratulations! A job well done. If you should have any questions relating to your particular installation, simply note the serial number on the stainless end-cap at the base of the Tides Track and contact Tides Marine at (800) 420-0949.

## Customer Comments:

Tides Marine would like to hear from you. Your comments will be helpful as we work to improve our installation brochures.

Please take a moment to complete this questionnaire and fax it back to Tides Marine when you can. If you prefer, you can go to [www.tidesmarine.com](http://www.tidesmarine.com) and complete the form electronically.

When your completed questionnaire is received, Tides Marine will send you your choice of two free replacement slides.

1) Were you able to follow the steps easily and in sequence?

☐

Yes

☐

No

If no, please let us know how we can improve the current format/information.

---

---

2) Did you discover your own “shortcuts” along the way during your Tides Track installation? If so, please share them with us:

---

---

3) Did the accompanying photos help you with your installation? \_\_\_\_\_

4) How long did it take you to install your Tides Track System? \_\_\_\_\_

5) Would you recommend the Tides Track System to other vessel owners? \_\_\_\_\_

Free Slide Choice #1 \_\_\_\_\_ (SH-400, SH-401, SH-402, SH-500, SH-600)

Free Slide Choice #2 \_\_\_\_\_ (SH-400, SH-401, SH-402, SH-500, SH-600)

Please fax your comments to:

**TIDES MARINE INC.**

(954) 420-5234

Or use the online comment card at:

[www.tidesmarine.com](http://www.tidesmarine.com)



**TIDES MARINE**

3251A S.W. 13th Drive Deerfield Beach, FL 33442

Toll Free Phone: (800) 420-0949 General Phone: (954) 420-0949

General Fax: (954) 420-0945 Order Fax: (954) 420-5234

Email: [customerservice@tidesmarine.com](mailto:customerservice@tidesmarine.com)

**[www.tidesmarine.com](http://www.tidesmarine.com)**